

**GENERAL PLANTING NOTES**

- THIS WORK INCLUDES, BUT IS NOT LIMITED TO THE FURNISHING OF ALL LABOR, MATERIALS, EQUIPMENT, FINAL GRADING, SEEDING, SOIL AMENDMENTS, ETC., AS MAY BE REQUIRED FOR A COMPLETE INSTALLATION.
- QUANTITIES SHOWN IN PLANT LISTS ARE FOR CONVENIENCE ONLY. PLANS SHALL GOVERN.
- THE LANDSCAPE CONTRACTOR SHALL NOTIFY THE LANDSCAPE ARCHITECT OF ANY DISCREPANCIES IN PLANT LOCATIONS OR INSUFFICIENT PLANT QUANTITIES DUE TO DIFFERENCES IN PLAN AND ACTUAL FIELD CONDITIONS.
- ALL TREE AND SHRUB MATERIAL SPECIFIED MUST MEET STANDARD INDUSTRY SPECIFICATIONS FOR THE CONTAINER SIZE INDICATED. DOWNSIZING OR SUBSTITUTION OF PLANT MATERIAL WITHOUT PRIOR APPROVAL OF LANDSCAPE ARCHITECT WILL NOT BE ALLOWED.
- ALL LANDSCAPE AREAS SHALL BE GRADED TO A SMOOTH EVEN SURFACE PRIOR TO ANY PLANT INSTALLATION. ALL PLANT MATERIALS SHALL BE INSTALLED USING GOOD HORTICULTURAL PRACTICES IN ACCORDANCE WITH THE PLANS AND DETAILS.
- TREES SHALL NOT BE PLANTED CLOSER THAN FOUR (4) FEET FROM ANY WALKWAY OR PUBLIC SIDEWALK EXCEPT WHERE TREE WELLS OR PARKWAYS ARE PROVIDED IN THE SIDEWALK AREA. ALL TREE PLANTED WITHIN FIVE (5) FEET OF WALKS OR PUBLIC UTILITIES SHALL RECEIVE DEEP ROOT BARRIERS.
- TREE LOCATIONS SHOWN ON PLAN MAY REQUIRE ADJUSTMENT IN THE FIELD, WHENEVER FEASIBLE. TREES SHOULD BE PLANTED A MINIMUM OF TEN (10) FEET FROM ALL UNDERGROUND UTILITIES, STREETLIGHTS, HYDRANTS, AND OUT OF DRAINAGE FLOW LINES. SHOULD THIS NOT BE POSSIBLE, CONTACT THE LANDSCAPE ARCHITECT FOR DECISION ON PLACEMENT.
- ALL TREES IN TURF AREAS SHALL HAVE 12" MIN. CLR. CIRCUMFERENCE AROUND THE TRUNK BASE. PROVIDE 2" MIN. THK. MULCH AT BASE OF TRUNK.
- GROUND COVER TYPE SHOWN SHALL BE PLANTED IN ALL SHRUB AREAS AS SPECIFIED ON PLANS. GROUND COVER SHALL BE PLANTED AT 8" ON-CENTER UNIFORM TRIANGULAR SPACING, AND SHALL BE CONTINUOUS UNDER ALL TREE AND SHRUB MASSES AS SHOWN ON PLAN.
- MATURE PLANTINGS SHALL NOT INTERFERE WITH UTILITIES AND TRAFFIC SIGHT LINES.
- ALL AREAS PLANTED WITH GROUND COVER SHALL BE MULCHED WITH SHREDED HARDWOOD MULCH. ALL REMAINING AREAS SHALL BE MULCHED WITH PINE STRAW.

**SYMBOL LEGEND**

5 MAG EXISTING TREE TO REMAIN WITH TREE PROTECTION FENCING

LARGE SHADE TREE COUNTED TOWARD PARKING LOT SHADE REQUIREMENTS (707 SF)

EXISTING SHADE TREE COUNTED TOWARD PARKING LOT SHADE REQUIREMENTS

**LANDSCAPE REQUIREMENTS**

	REQUIRED	PROVIDED
<b>PARKING LOT INTERIOR CANOPY COVERAGE</b> 42,567 SF (30%)	12,770 SF	14,009 SF* 23 TREES, 5 EXISTING TREES = 1,283 SF 18 PROPOSED LARGE SHADE TREES(707 SF) = 12,726 SF
<b>STREET YARD PLANTING</b> TIBURON DRIVE (571 LF x 18')	10,278 SF 17 (1/ 600 SF)	14,418 SF 18 CANOPY TREES TOTAL: 6 EXISTING CANOPY TREES 6 PROPOSED CANOPY TREES 12 PROPOSED UNDERSTORY TREES = 4 CANOPY TREES
<b>SHRUBS REQUIRED</b>	102 (6/ 600 SF)	111
<b>FOUNDATION PLANTING</b>	12% FACADE AREA (ADJ. TO PARKING/DRIVE AISLE)	
<b>FITPARK</b>		
NORTH SIDE (160LF x 45' x .12) + (220 x 33' x .12)	1,735 SF	4,930 SF
EAST SIDE (138 x 33' x .12)	546 SF	2,837 SF
SOUTH SIDE (409 x 33' x .12)	1,619 SF	3,669 SF
WEST SIDE (50 x 45' x .12) + (77 x 33' x .12)	575 SF	3,566 SF
<b>LOB III</b>		
SOUTH SIDE (222 LF x 60.75' x .12)	1,618 SF	2,394 SF

**PRESERVED TREES ONSITE**

QUANTITY	SIZE	COMMON NAME	CREDITS
1	4"	MAGNOLIA	1
1	2"	MAGNOLIA	2
1	8"	PINE	2
3	8"	OAK	6
2	9"	OAK	4
4	10"	OAK	6
1	12"	MAPLE	3
2	12"	PINE	6
5	13"	PINE	15
1	13"	OAK	3
6	14"	PINE	18
8	15"	PINE	24
3	16"	PINE	9
1	17"	PINE	18
1	18"	PINE	4
1	24"	PINE	4

TOTAL CREDITS FOR PRESERVED TREES : 127

**TREE MITIGATION REQUIREMENTS -**

ALL TREES LISTED BELOW ARE LOCATED WITHIN THE BUILDING 4 BUILDING PAD

REMOVED REGULATED PINES	QUANTITY	SIZE	COMMON NAME	% MITIGATION
1	12"	PINE	50	
2	13"	PINE	50	
1	15"	PINE	50	
1	16"	PINE	50	
1	17"	PINE	50	
3	18"	PINE	50	
<b>140%</b>				

**REMOVED REGULATED HARDWOODS**

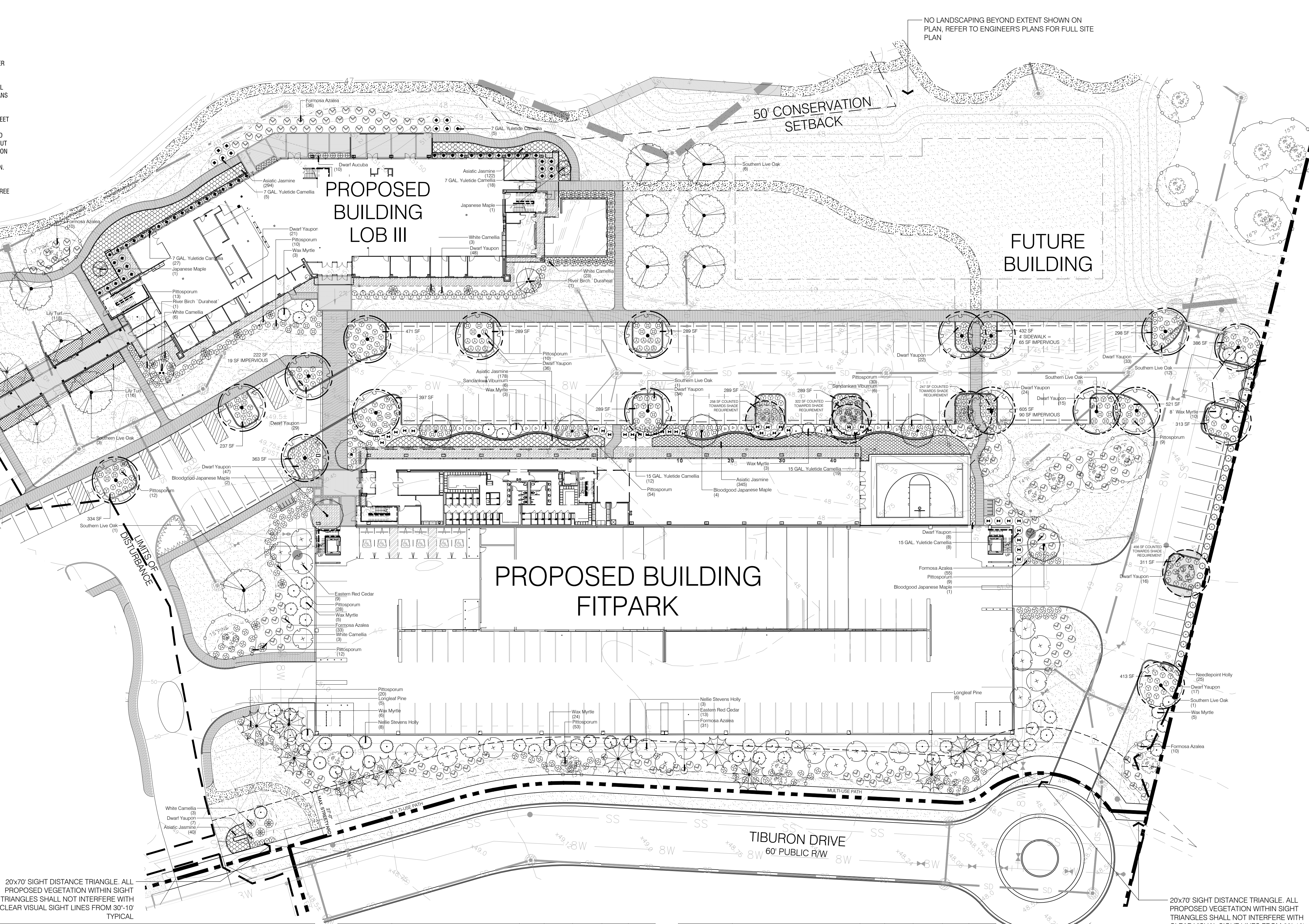
QUANTITY	SIZE	COMMON NAME	% MITIGATION
2	8"	OAK	100
1	10"	OAK	100
1	11"	OAK	100
2	12"	OAK	100
1	15"	OAK	100
1	18"	OAK	100
<b>94%</b>			

TOTAL = 234/3 = 78 TREES

TOTAL CREDITS FOR PRESERVED TREES : 127  
PRESERVED TREE CREDITS FULFILLING MITIGATION REQUIREMENT: 78

**OVERALL TREE REQUIREMENTS (15 TREES/DISTURBED ACRE)**

REQUIRED:	12.94 ACRES DISTURBED x 15 TREES = 194 TREES REQUIRED
PROVIDED:	127 TREE CREDITS (EXISTING RETAINED TREES) 83 TREES PROPOSED - REFER TO PLANTING LEGEND
TOTAL:	210 TREES PROVIDED



20x70' SIGHT DISTANCE TRIANGLE. ALL PROPOSED VEGETATION WITHIN SIGHT TRIANGLES SHALL NOT INTERFERE WITH CLEAR VISUAL SIGHT LINES FROM 30'-10' TYPICAL

**PLANT SCHEDULE OVERALL**

LARGE SHADE TREES	BOTANICAL NAME / COMMON NAME	CONT	CAL	RANGE	QTY
+	Acer p. 'Bloodgood' / Bloodgood Japanese Maple	B & B	3" GAL	8-10' HT	7
+	Acer palmatum / Japanese Maple	15 gal	2" GAL	6-8' HT	2
+	Green Leaf Japanese Maple				
+	Betula nigra / River Birch 'Duraheat'	B & B	3" GAL	10-12' HT	2
+	Pinus palustris / Longleaf Pine	2" CAL			11
+	Quercus virginiana / Southern Live Oak	B & B	4" CAL	10-12' HT	18
+	Quercus virginiana / Southern Live Oak	SPADED	9" CAL	14-16' HT	10
+	Small Shade Trees				
+	Ilex x 'Nelle R Stevens' / Nelle Stevens Holly	B & B		8-10' HT	11

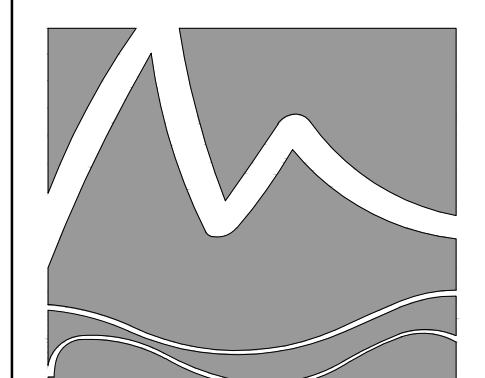
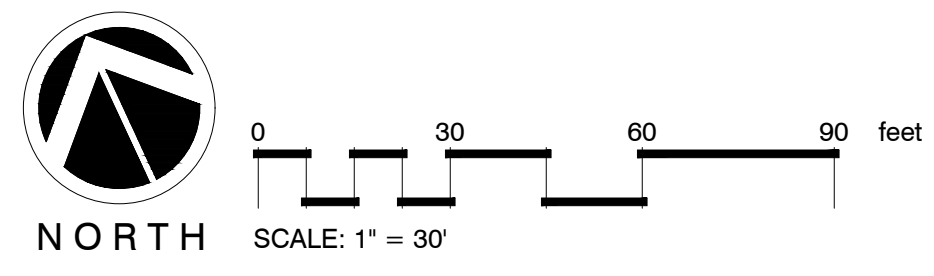
SHRUBS	BOTANICAL NAME / COMMON NAME	SIZE	RANGE	QTY
+	Juniperus virginiana / Eastern Red Cedar	B & B	8-10' HT	22
+	Aucuba japonica 'Nana' / Dwarf Aucuba	7 gal		10
+	Azalea indica / Formosa Azalea	7 gal		175
+	Camellia s. 'Hana Aman' / White Camellia	--	6' HT	38
+	Camellia s. 'Yuletide' / 7 GAL Yuletide Camellia	7 gal	3-4' HT	55
+	Camellia sasanqua 'Yuletide' / 15 GAL Yuletide Camellia	15 gal		39
+	Ilex cornuta 'Needpoint' / Needpoint Holly	7 gal	3-4' HT	25
+	Ilex x 'Nana' / Dwarf Yaupon	7 gal	18-24' HT	357
+	Myrica cerifera / 8' Wax Myrtle	--	8' HT	10
+	Myrica cerifera / Wax Myrtle	15 gal		49

+	Pittosporum tobira / Pittosporum	10 gal	24-30' HT	239
+	Viburnum suspensum / Sandankwa Viburnum	15 gal		12
+	Ground Covers			
+	Liriope m. 'Big Blue' / Lily Turf	1 quart	6-12' HT	18" o.c. 425
+	Trachelospermum a. 'Asiatic' / Asiatic Jasmine	1 qt	6-12' HT	24" o.c. 979
+	Sod/Seed			
+	Zoysia japonica 'Emerald' / Emerald Zoysia	sod		

\*NOTE: PRIOR TO ANY CLEARING, GRADING, OR CONSTRUCTION ACTIVITY, TREE PROTECTION FENCING WILL BE INSTALLED AROUND PROTECTED TREES OR GROVES OF TREES. NO CONSTRUCTION WORKERS, TOOLS, MATERIALS OR VEHICLES ARE PERMITTED WITHIN THE TREE PROTECTION FENCING

**Approved Construction Plan**

Name	Date
Planning	
Traffic	
Fire	



**MIHALY**  
LAND DESIGN  
PLANNING + LANDSCAPE ARCHITECTURE  
330 MILITARY CUTOFF RD., Suite A3  
Wilmington, NC 28405 910.392.4355



Revisions  
2017-12-18: REVISED PLAN PER COMMENTS FROM COW.

CLIENT  
**LIVE OAK BANK**  
1741 TIBURON DRIVE  
WILMINGTON, NC

PROJECT  
**LIVE OAK BANK**  
BUILDING 3 AND FITPARK  
TIBURON DRIVE  
LANDSCAPE PLANS

Date: 11/27/2017  
Phase: CD  
Job Number: 560-07  
Designed by: MLD  
Drawn by: ALM  
Checked by: JWM

Sheet Title:  
**PLANTING PLAN - OVERALL**

Sheet Number:  
**L1.0**  
of 1 sheets